

PRELIMINARY SUBDIVISION PLAN OF PARTS OF
 LOT A AND AN UNDIVIDED 1/24th SHARE IN
 LOT G PLAN KAP53116 SECTIONS 1 AND 12
 TOWNSHIP 26 ODYD PLAN KAP66064

PLAN EPP _____

PRELIMINARY

BCGS 82E.084



THE INTENDED PLOT SIZE OF THIS PLAN IS 864mm IN WIDTH BY 560mm IN HEIGHT (D SIZE) WHEN PLOTTED AT A SCALE OF 1:600

PRELIMINARY

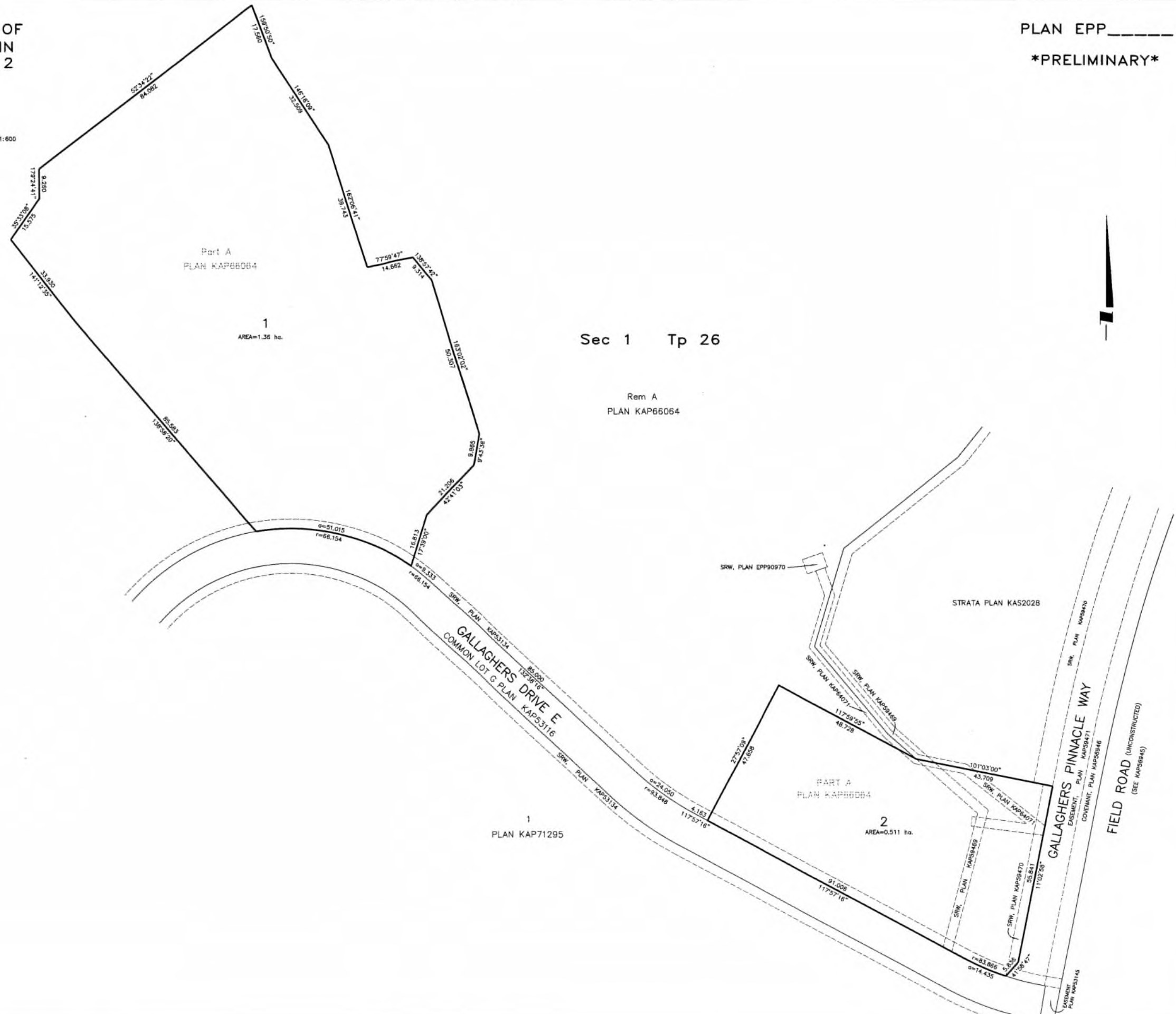
DATE: NOVEMBER 22, 2023

CLIENT: CRC CANADIAN RETIREMENT CORP.

NOTE: ACCESS TO LOT 1 WILL BE THROUGH
 COMMON LOT G, PLAN KAP53116 PURSUANT TO BC
 REGULATION 334/79. LOT 1 WILL DERIVE A 1/72
 SHARE IN COMMON LOT G, PLAN KAP53116.

NOTE: ACCESS TO LOT 2 WILL BE THROUGH
 COMMON LOT G, PLAN KAP53116 PURSUANT TO BC
 REGULATION 334/79. LOT 2 WILL DERIVE A 1/72
 SHARE IN COMMON LOT G, PLAN KAP53116.

NOTE: LOT AREAS AND DIMENSIONS ARE
 SUBJECT TO FINAL LEGAL SURVEY.



PRELIMINARY

LEGEND

INTEGRATED SURVEY AREA NO. 4, CITY OF KELOWNA,
 NAD83 (CSRS) 4.0.0.BC.1

GRID BEARINGS ARE DERIVED FROM OBSERVATIONS
 BETWEEN GEODETIC CONTROL MONUMENTS (LIST
 CONTROL MONUMENTS) AND ARE REFERRED TO THE
 CENTRAL MERIDIAN OF UTM ZONE 11.

THE UTM COORDINATES AND ESTIMATED ABSOLUTE
 ACCURACY ACHIEVED ARE DERIVED FROM MASCO
 PUBLISHED COORDINATES AND STANDARD DEVIATIONS FOR
 GEODETIC CONTROL MONUMENTS (LIST CONTROL
 MONUMENTS).

THIS PLAN SHOWS HORIZONTAL GROUND-LEVEL
 DISTANCES UNLESS OTHERWISE SPECIFIED. TO COMPUTE
 GRID DISTANCES, MULTIPLY GROUND-LEVEL DISTANCES
 BY THE AVERAGE COMBINED FACTOR OF 0.9999
 WHICH HAS BEEN DERIVED FROM GEODETIC CONTROL
 MONUMENTS (LIST CONTROL MONUMENTS).

THIS PLAN LIES WITHIN THE REGIONAL DISTRICT OF
 CENTRAL OKANAGAN.

ACCESS BY COMMON LOT.

THIS PLAN LIES WITHIN THE JURISDICTION OF THE
 APPROVING OFFICER FOR THE CITY OF KELOWNA.

THE FIELD SURVEY REPRESENTED BY THIS PLAN WAS
 COMPLETED ON THE xx DAY OF xxxxx, 202x
 CAMERON HENRY, BCLS 857

Ferguson Land Surveying & Geomatics Ltd.
 B.C. AND CANADA LAND SURVEYORS
 404-1630 PANDOSY STREET, KELOWNA, B.C.
 TELEPHONE (250) 763-3115 FAX (250) 763-0321

